

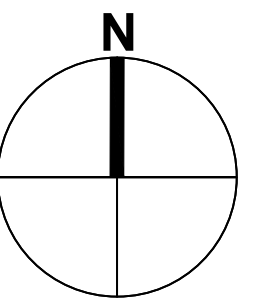
Prepared for:

TO RESIDENCE
14 SKYRIDGE COURT
GORMLEY, ON

Prepared by:



North Arrow:



4	ISSUED FOR ARCHITECT	FEB 2016
3	ISSUED FOR FINAL REVIEW	16 NOV 2015
2	ISSUED FOR REVIEW	21 OCT 2015
1	ISSUED FOR PROPOSAL	15 OCT 2015

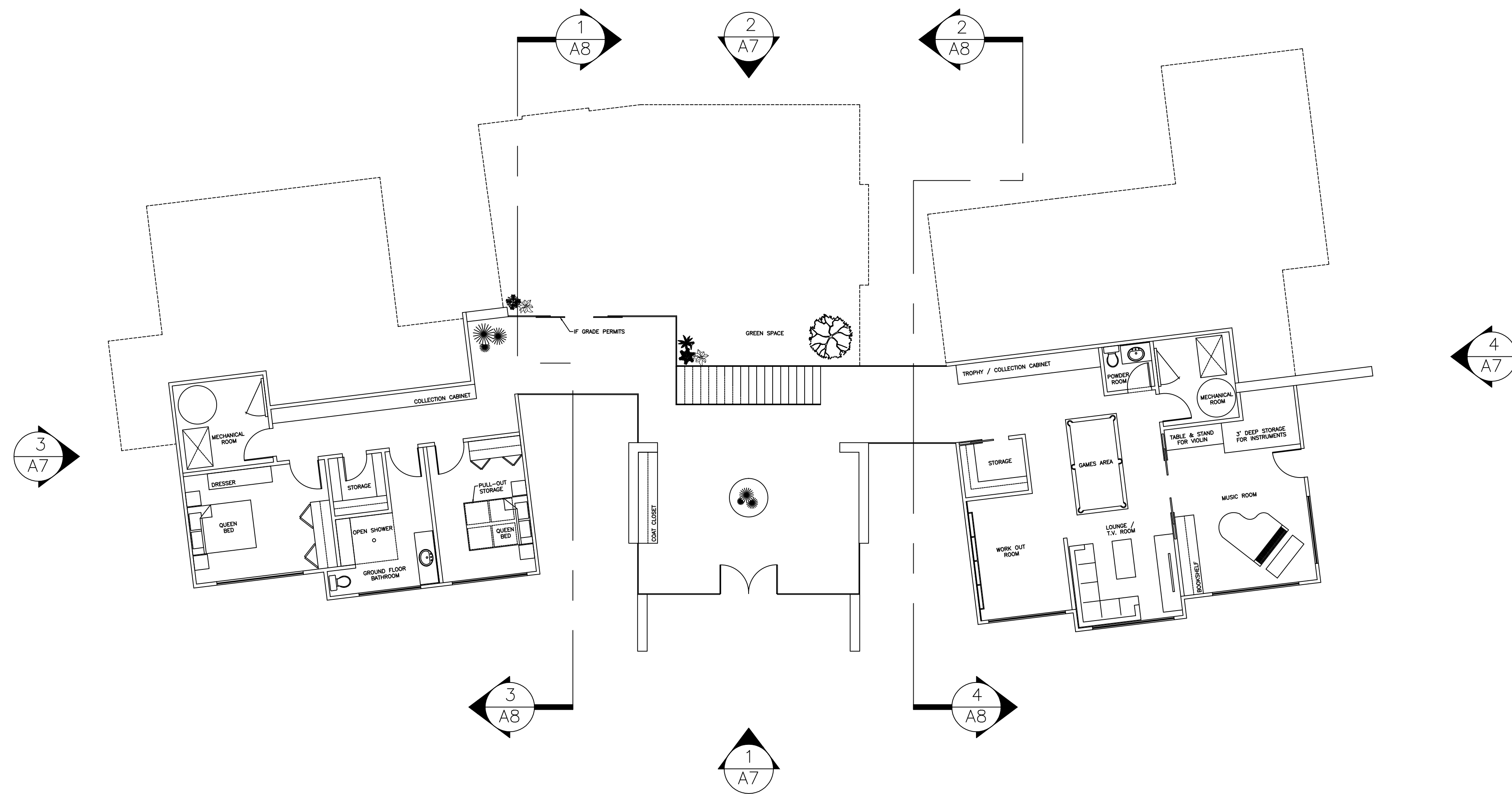
Issue Date: FEB 2016
Dwg Scale: 1/8"=1'-0"

Drawn By: C.F.
Reviewed By: L.R.

TO RESIDENCE
14 SKYRIDGE COURT
GORMLEY, ON

PARTITION PLAN

A1-1



1 WALK-OUT BASEMENT PLAN
A1 1/8"=1'-0"